



# Introduction to the WEEE Regulations and Open Scope

---

Nigel Harvey  
CEO  
Recolight



# Introduction to the WEEE regulations and to open scope

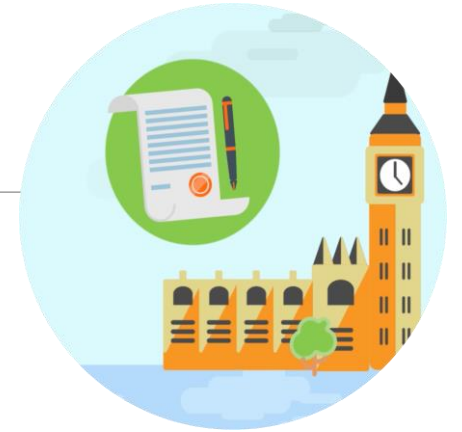
---

- Summary of the WEEE regulations
  - Complying with the WEEE regulations
- Scope
  - Products in scope
  - Examples of household luminaires
  - Other products now in scope
- Dual use product
- Timescales for compliance
  - New and existing producers
- How much will it cost?
- Recolight support for compliance



# Summary of the WEEE regulations

---



- Objective to increase Waste Electricals recycled/reused and reduce landfill
- Polluter pays principle
  - Original producer is “polluter”
- Came into force July 2007
- Most products in scope from 2007
- Producer is:
  - Importer of product from outside the UK
  - Own brander
  - Manufacturer inside the UK

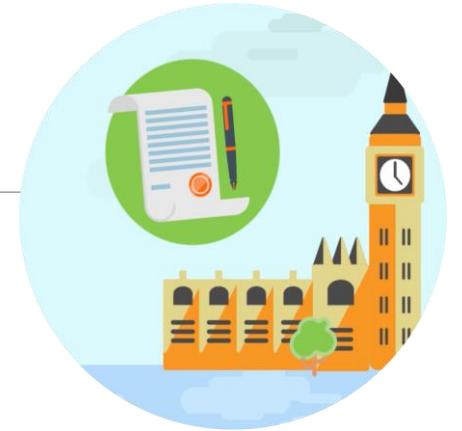
# Agbogbloshie, Ghana



# Complying with the WEEE regulations

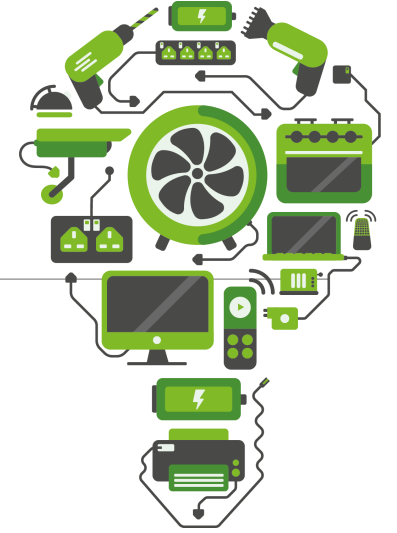
Producers must:

- Apply the crossed-wheelie bin symbol to product
- Join a WEEE scheme
  - Has duty to recycle to meet targets
- Report weight of product supplied in the UK
  - Split by category...
  - ... and household/non-household
- Supply WEEE number to distributors
- Provide product information to help recycling



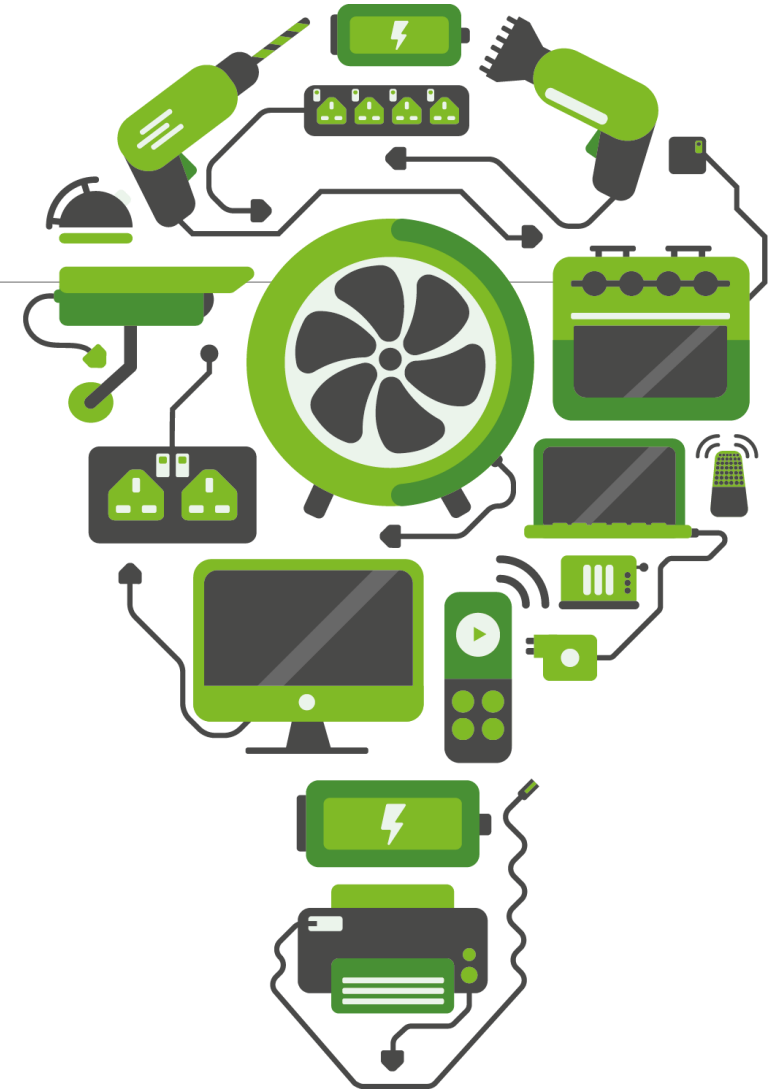
# What products are in scope?

- Most electrical products already in scope
- From end 2018:
  - Exemption for household luminaires is removed
  - Some other products come into scope
- Cause is the move from “closed scope” to “open scope”



# The 14 categories in the UK

1. Large household appliances
2. Small household appliances
3. IT and telecommunications equipment
4. Consumer equipment
5. Lighting equipment
6. Electrical and electronic tools
7. Toys, leisure and sports equipment
8. Medical devices
9. Monitoring and control instruments
10. Automatic dispensers
11. Display equipment;
12. Cooling appliances containing refrigerants;
13. Lamps
14. PV panels



# Examples of household luminaires now in scope

- Decorative lighting chains
- Ceiling rose with flex and lamp holder
- Table, wall, ceiling, pendant and other light fittings
- Flood lights with/without PIR detector
- Smart LED mirrors
- Trailer light board – detachable lights for caravans and trailers
- Indoor and outdoor luminaires



All reported in **category 5**

- Removeable lamps must be reported separately in **category 13**



# Examples of household luminaires now in scope



# Examples of other products now in scope

---

## Wiring accessories **category 2**

- e.g. switches, dimmers, plugs, sockets and adaptors

## Consumer units and circuit breakers **category 9**

## The lamps **category 13** includes:

- All existing gas discharge and LED lamps plus:
  - LED tape and strips
  - Multi-functional lamps
    - e.g. with wi-fi booster, PIR sensor, or speakers
- Smart lamps
  - e.g. programmable, colour changing

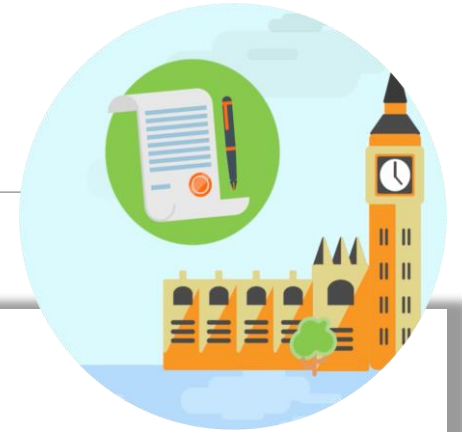


# Dual use product

- Product that could be used by a business or household
- Must be recorded as **Household**
- Typical lighting examples include:
  - Downlighters
  - Batten fittings
  - Corridor and bulkhead fittings



# Timescales and actions to comply



2018

- New producers must join a PCS by 15<sup>th</sup> November 2018
- Small producers (<5 tonnes) may register directly
- Receive WEEE registration number

2019

- Existing and new producers must record weight of product supplied from **January 2019**
  - For luminaires, weight should include base/shade supplied with the fitting
- Recolight secure online Black Box for reporting

2020

- Recolight receives target based on prior year product supplied
- Recolight charges incorporate cost of recycling to meet target

# How much will it cost?



<b>2018</b>	No charge
<b>2019</b>	<ul style="list-style-type: none"><li>• <b>New Recolight scheme members:</b></li><li>• Recolight scheme membership (£150)</li><li>• Environment agency charges (currently £445, increasing to £750)<ul style="list-style-type: none"><li>• Increase NOT passed on by Recolight in 2019</li></ul></li><li>• <b>Existing Recolight scheme members:</b></li><li>• No additional charges</li></ul>
<b>2020</b>	<ul style="list-style-type: none"><li>• Newly in-scope product charges based on weight of product sold in 2020</li><li>• Indicative cost per Kg available now. Fixed in Q4 2019.</li></ul>

## Recolight always drive to reduce charges:

- B2B luminaire prices halved in April 2018
- LED prices reduced in 2018 and 2019

# Summary

- **No change** for most electrical producers
- **New producers** (eg household luminaire, wiring accessory) must register with a WEEE Scheme by 15 November 2018
- Only additional costs in 2019 will be:
  - Scheme membership costs
  - Environment Agency charges

**For more information call Recolight on  
020 8253 9750**





# Introduction to the WEEE regulations and Open Scope

---

Nigel Harvey  
CEO  
Recolight

